

# Pre Primary 2024

Teacher: Miss Joanne Carlos [Joanne.Carlos@cewa.edu.au](mailto:Joanne.Carlos@cewa.edu.au)

Education Assistant: Mrs Lourds Enoch



## SCHOOL HOURS

8:20am	Classroom doors open - children encouraged to independently bring their water bottle, black folder and/or library bag inside the classroom.
8:30am	School begins
10:20am - 11am	Recess and play
12:20pm - 12:55pm	Lunch and play
12:55pm - 1:05pm	Story time with Kindy and Year One
2:45pm	End of school



## LATE TO SCHOOL/EARLY DEPARTURE

If you are running late to school, children need to go to the office with a guardian and complete the required sign-in. Children need to collect a red 'late' card from the office and the teacher will collect this when the child walks into class.

A green 'early departure' card must be collected from the office and given to the classroom teacher before students leave school early.



## ASSEMBLIES

On the odd weeks of term (1, 3, 5, 7 and 9), assembly is held at 8:35am on Monday. The school gathers in the undercover area to Acknowledge Country, pray, sing the National Anthem and reflect on school values. On the even weeks (2, 4, 6, 8 and 10), assembly is held at 8:35am in the school hall. Class items are performed, birthday certificates are given and merit certificates are awarded to students.

## JEWELLERY / TOYS / VALUABLES

We understand how precious jewellery, toys and valuables are, so please keep them safely at home. Please note that no responsibility is taken for valuables that are brought to school.



## ABSENT FROM SCHOOL

If children are absent from school, their guardian is asked to complete an absentee form, which can be found through the following link on the school website.



<https://www.stcecilia.wa.edu.au/online-absentee-form/>

## BIRTHDAYS

Birthdays are recognised in class and at assemblies. Please do not send cakes, lolly bags or treats to school to celebrate your child's birthday. If your child is inviting the whole class to a party, please let me know and I can help share invitations.



## FLEXISCHOOLS

Excursions and recess & lunch orders can be paid for online through Flexischools.





## UNIFORM REQUIREMENTS

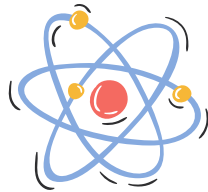
- St Cecilia's polo shirt with black school shorts or skirts
- Black shoes with white socks OR brown sandals
- Earrings - small sleepers or studs.
- No nail polish
- Hair accessories - green, white or black
- St Cecilia's school bag
- St Cecilia's school hat



## SPECIALIST TEACHERS

Mrs Kristine Lee-Gowland:  
Physical Education and Health  
[Kristine.Lee@cewa.edu.au](mailto:Kristine.Lee@cewa.edu.au)

Mrs Nicole Drysdale:  
Science and Technology  
[Nicole.Drysdale@cewa.edu.au](mailto:Nicole.Drysdale@cewa.edu.au)



Ms Jody Tait  
Music  
[Jody.Tait@cewa.edu.au](mailto:Jody.Tait@cewa.edu.au)

## SPARE UNIFORM

Accidents and messy play happen, so please provide a change of uniform and underwear in your child's school bag every day. Please ensure all spare clothes and underwear are labelled.

## LABELLING

Please label ALL of your child's items clearly so in case they get lost, there is a better chance of finding lost property. E.g. hat, black folder, library bag, lunch boxes, containers, water bottle, all clothing items, shoes, socks.

## HOMEWORK

Homework is encouraged but not compulsory. It will begin mid-Term 1. Including:

- Reading
- Practising letter-sound knowledge
- Comprehension reading packs



*"Young children whose parents read them five books a day, enter school having heard about 9.4 million more words than kids who were never read to."*

## SHARED STATIONERY



In Pre Primary we share stationery. The stationery remaining at the end of the school year will be distributed amongst children.

## PRE PRIMARY TIMETABLE

	MONDAY	TUESDAY	WEDNESDAY	THURSDAY	FRIDAY
8:30am – 8:45am	Morning activities Morning fitness	Morning activities Morning fitness	Morning activities Morning fitness	Morning activities Morning fitness	Morning activities Morning fitness
8:45am – 8:55am	ENGLISH	ENGLISH	ENGLISH	ENGLISH	ENGLISH
8:55am – 9:20am					
9:20am – 10:20am			RECESS		
10:20am – 11:00am	MATHEMATICS	MATHEMATICS	SCIENCE with Mrs Drysdale	MATHEMATICS	MATHEMATICS
11:00am – 11:20am			LUNCH		
11:20am – 12:20pm	STORYTIME WITH KINDY AND YEAR ONE				
12:20pm – 12:55pm	QUIET TIME	QUIET TIME	HEALTH AND PHYSICAL EDUCATION with Mrs Lee-Gowland	QUIET TIME	QUIET TIME
12:55pm – 1:05pm	RELIGIOUS EDUCATION	RELIGIOUS EDUCATION		RELIGIOUS EDUCATION	RELIGIOUS EDUCATION
1:05pm – 1:15pm	1:55pm MUSIC with Ms Tait	INTEGRATED / PLAY		INTEGRATED / PLAY	INTEGRATED / PLAY
1:15pm – 1:35pm					
1:35pm – 2:45pm					